

3587-12 DESIGN S3 - 65 VBIAS- 40 VOLTS IR- 88 nA TEMP-22.1DC T= 70 MICRONS DATE:31/07/2023

DETECTOR LINE - 51.0 Kev (NN+)	DETECTOR LINE- 54.3 Kev
SYSTEM- 31.0 Kev	SYSTEM- 30.0 Kev
CALCULATED- 40.5 Kev	CALCULATED- 45.3 Kev

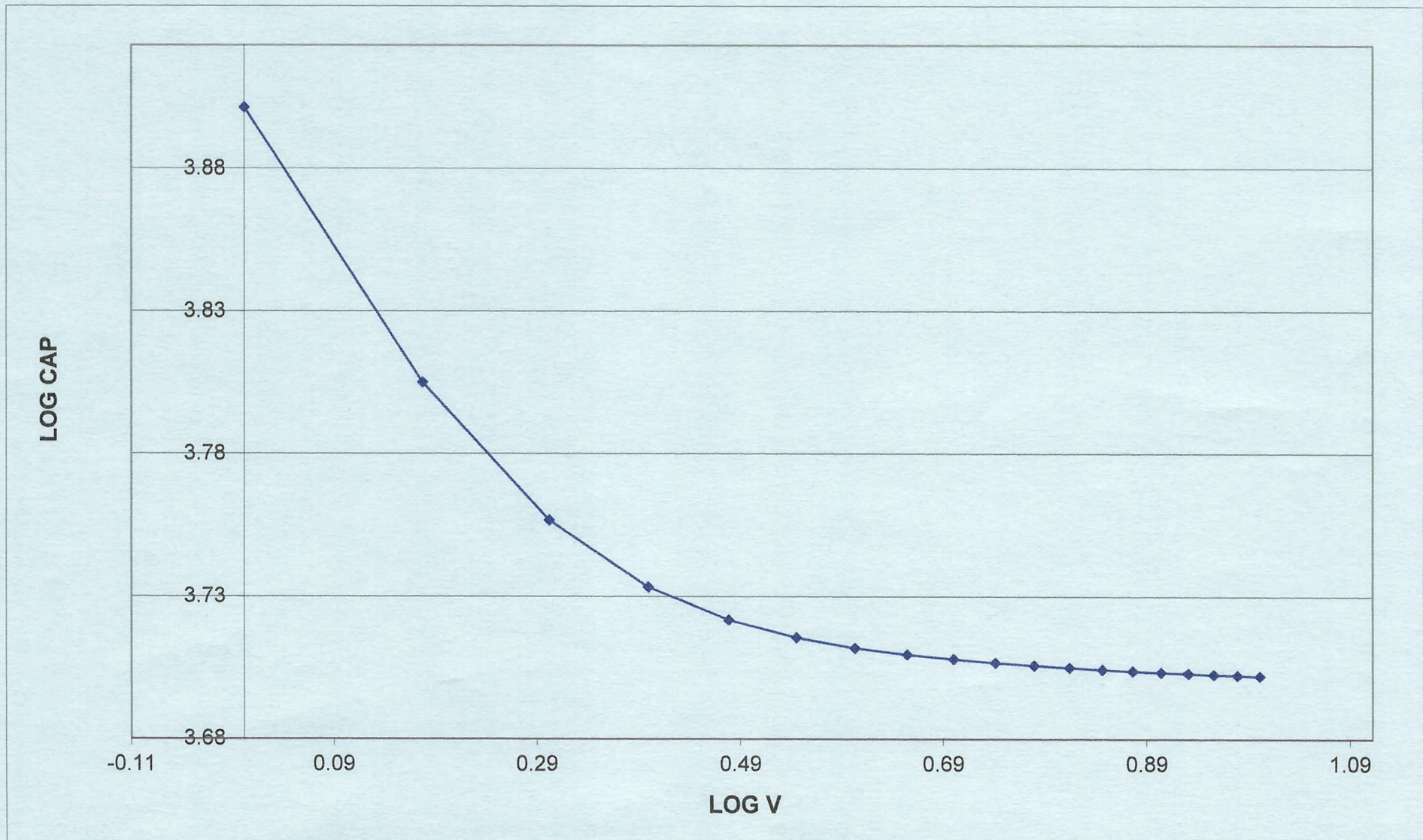
RESOLUTION FOR CHANNEL NUMBER 2

depletion Plot S3-65

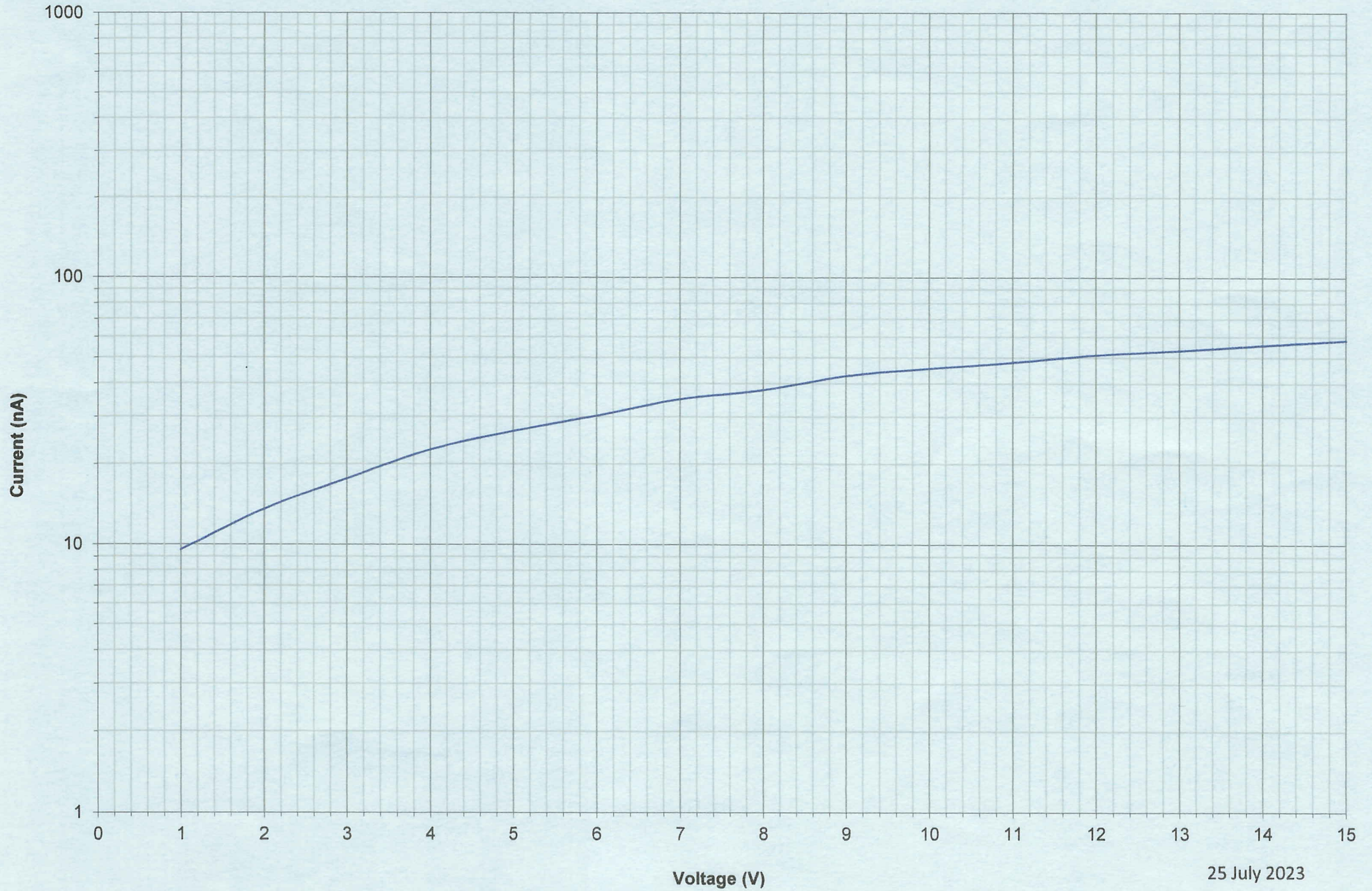
Wafer No.: 3587-12

Thickness: 70 um

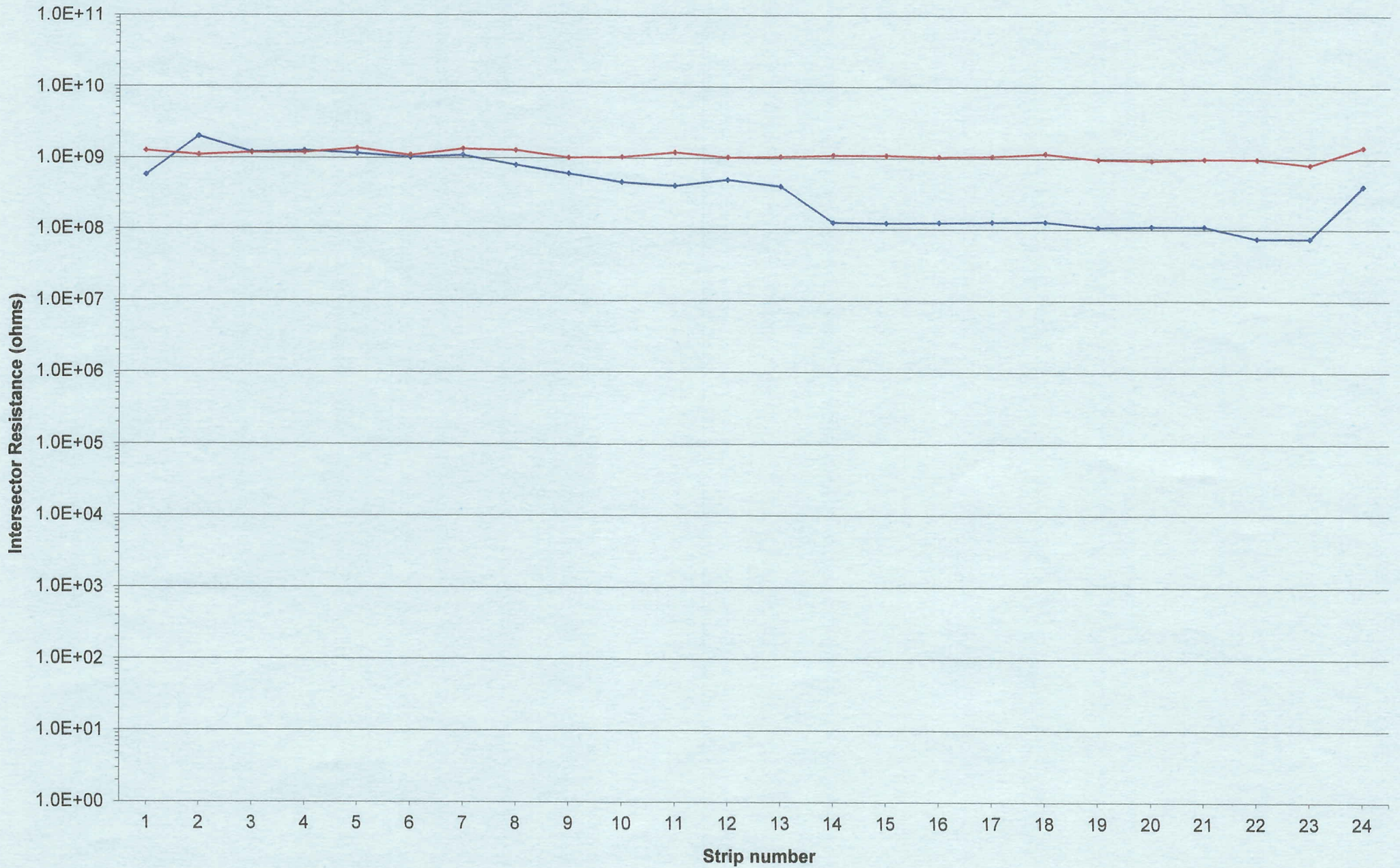
Depletion: 2 Volts



S3_65
3587-12 TOTAL DETECTOR IV
Dep=2V Thickness=70um



S3_65
3587-12 Junction side Dep=2V



Inter @ Dep Inter @ 2* Dep V

S3_65
3587-12 Ohmic side Dep=2V

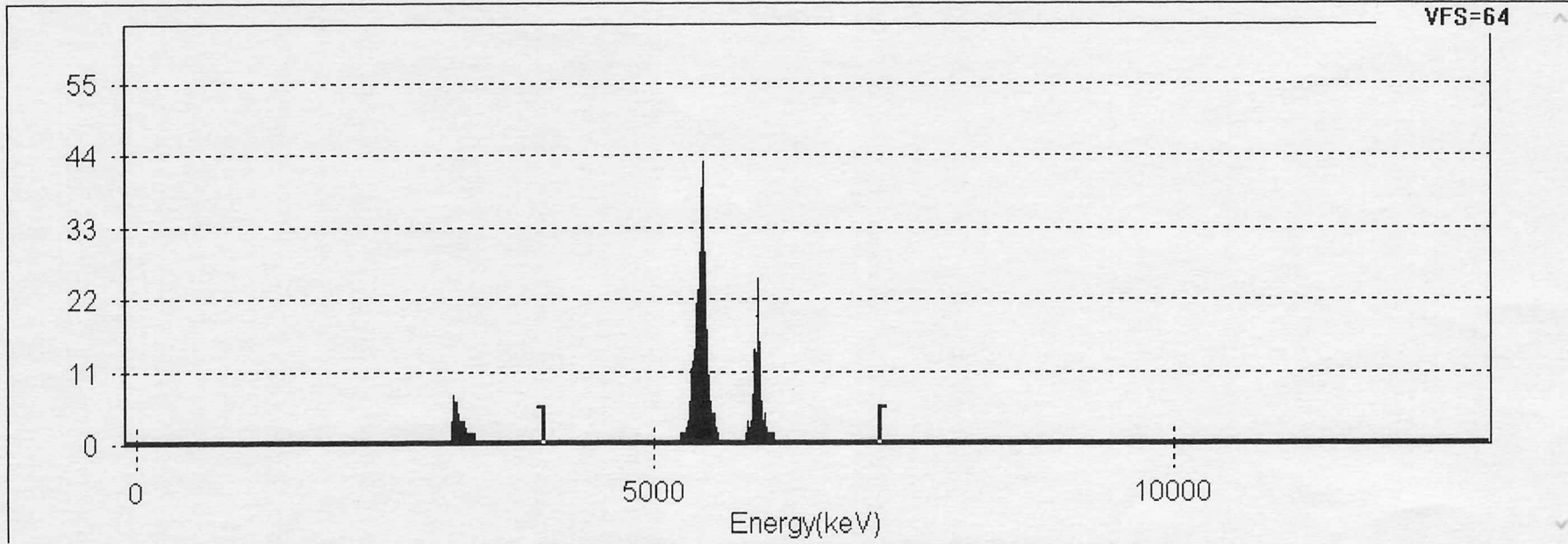


25 July 2023

S3_65
3587-12 Ohmic side Dep=2V



Inter @ Dep Inter @ 2* Dep V



3587-15 DESIGN S3 - 65 VBIAS- 40 VOLTS IR- 70 nA TEMP-22.1DC T= 70 MICRONS DATE:31/07/2023

DETECTOR LINE - 61.9 Kev (NN+)	DETECTOR LINE- 65.5 Kev
SYSTEM- 44.0 Kev	SYSTEM- 43.9 Kev
CALCULATED- 43.5 Kev	CALCULATED- 48.6 Kev

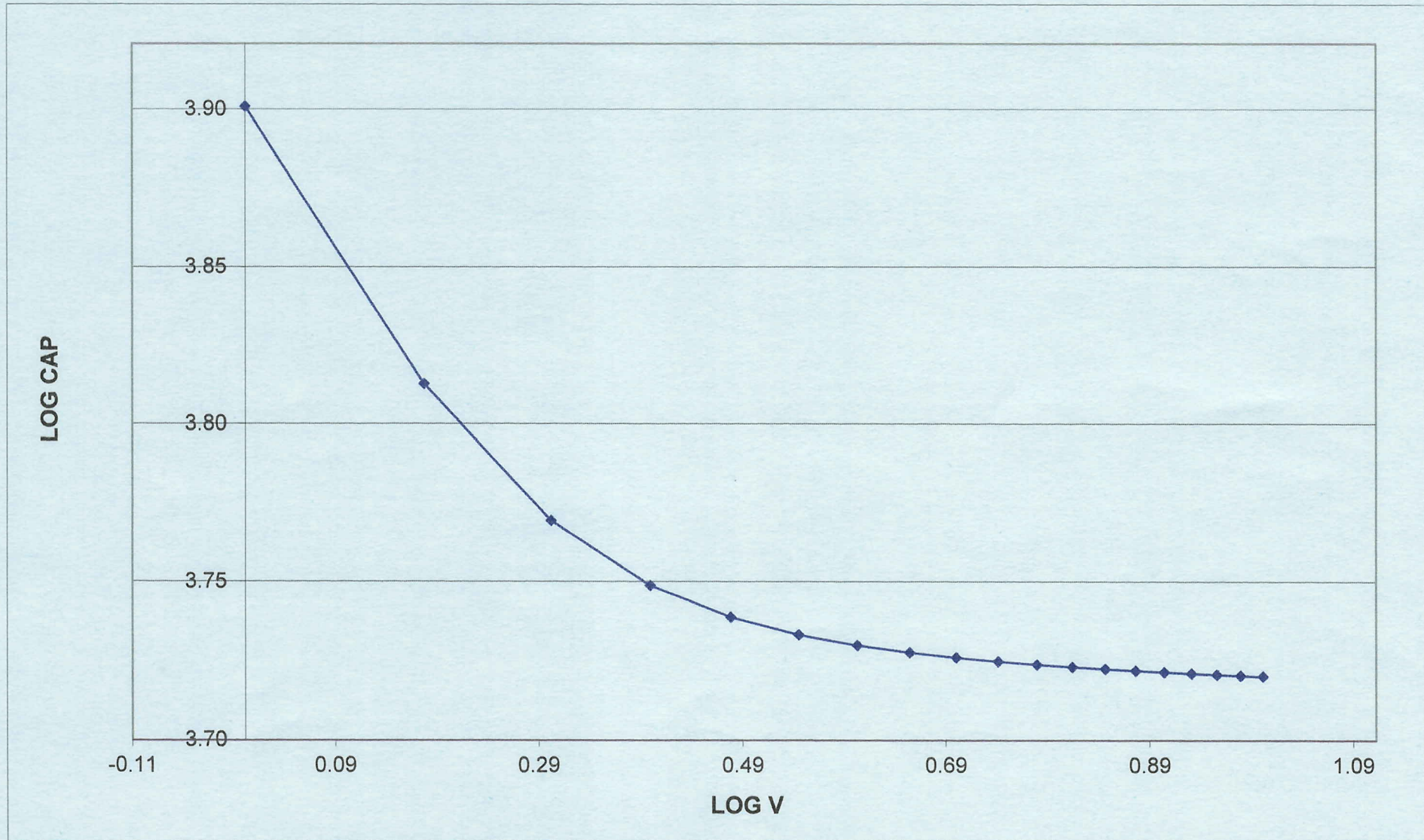
RESOLUTION FOR CHANNEL NUMBER 4

Depletion Plot S3-65

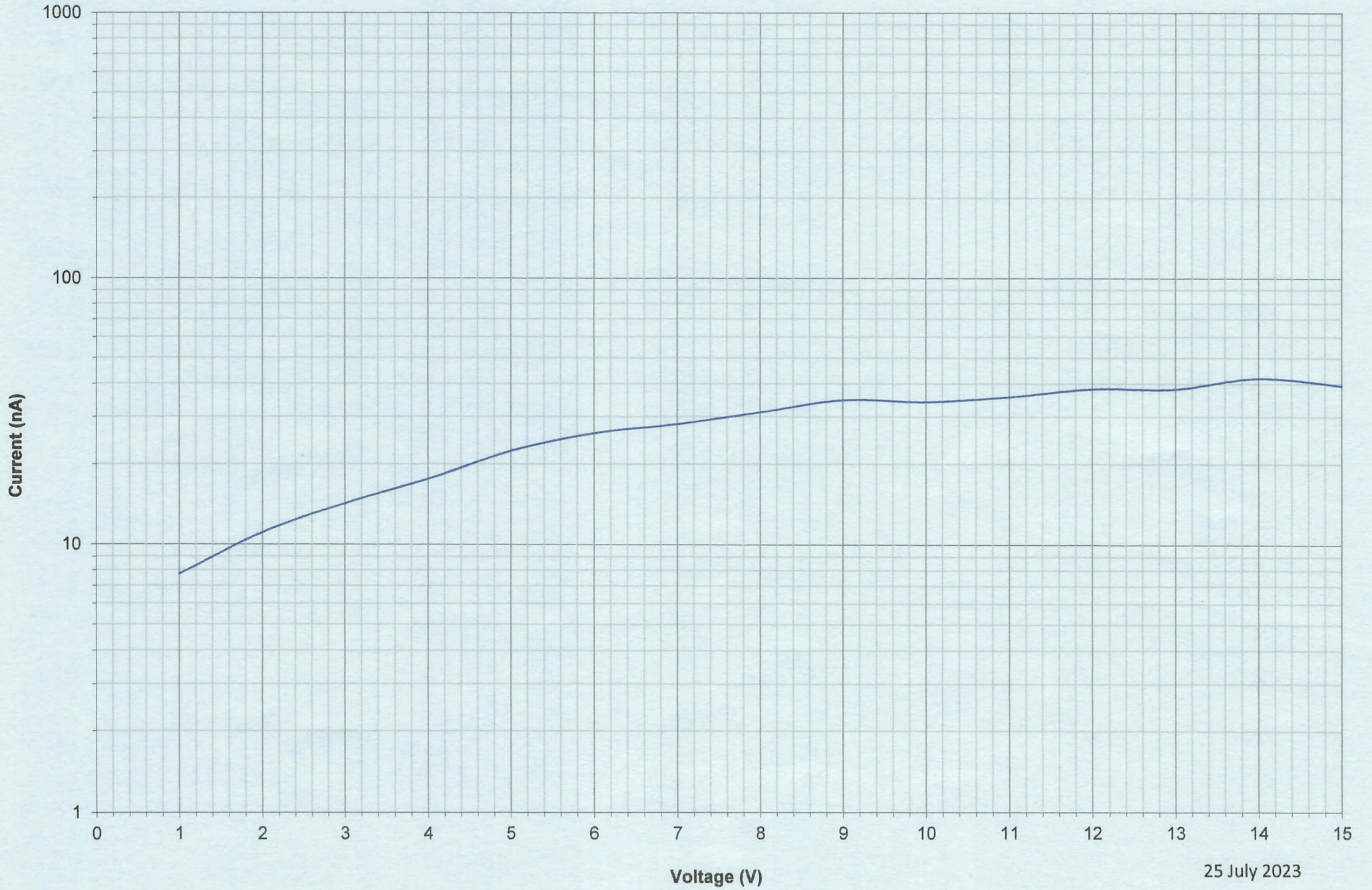
Wafer No.: 3587-15

Thickness: 70 μm

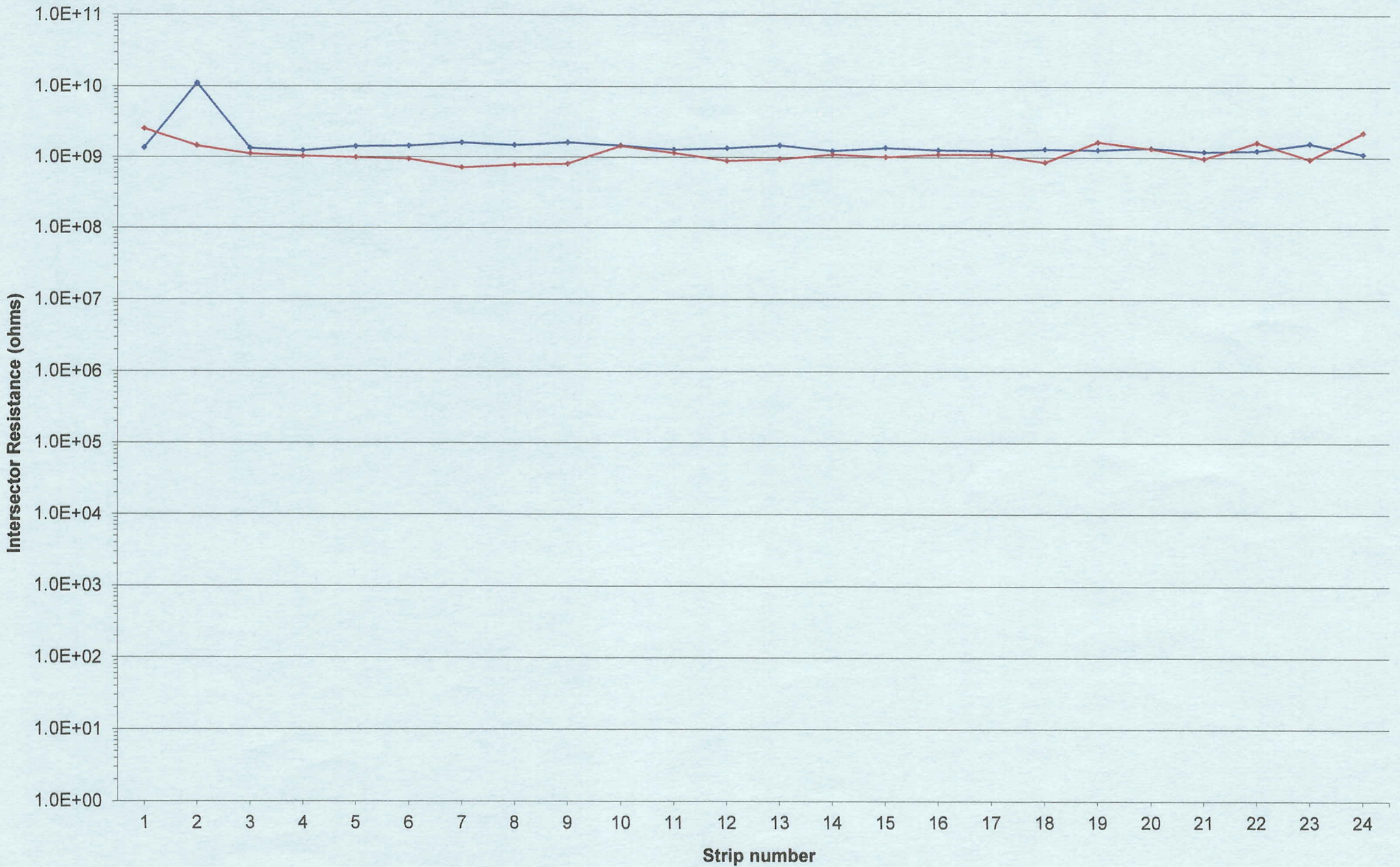
Depletion: 3.2 Volts



S3_65
3587-15 TOTAL DETECTOR IV
Dep=3.2V Thickness=70um

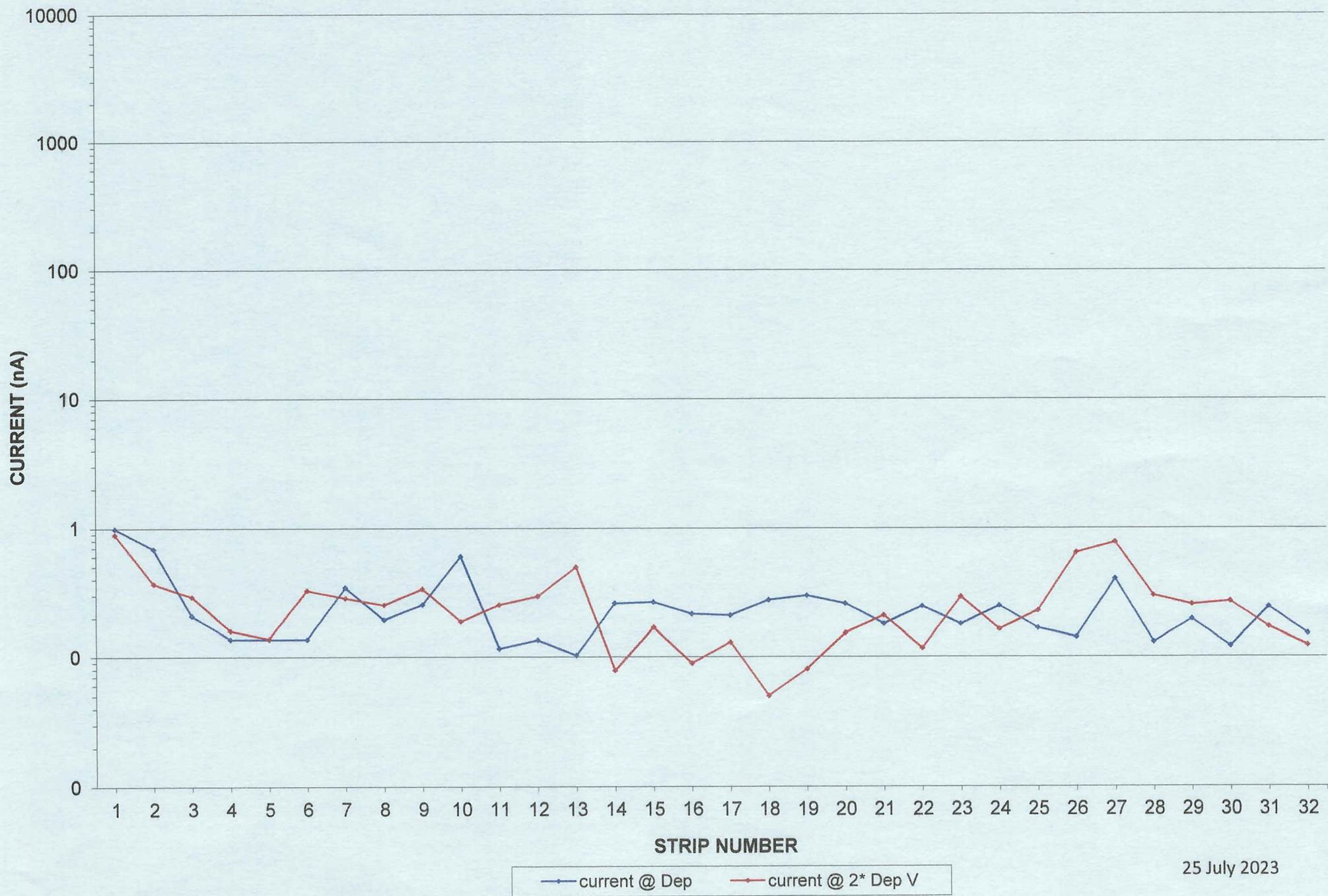


S3_65
3587-15 Junction side Dep=3.2V



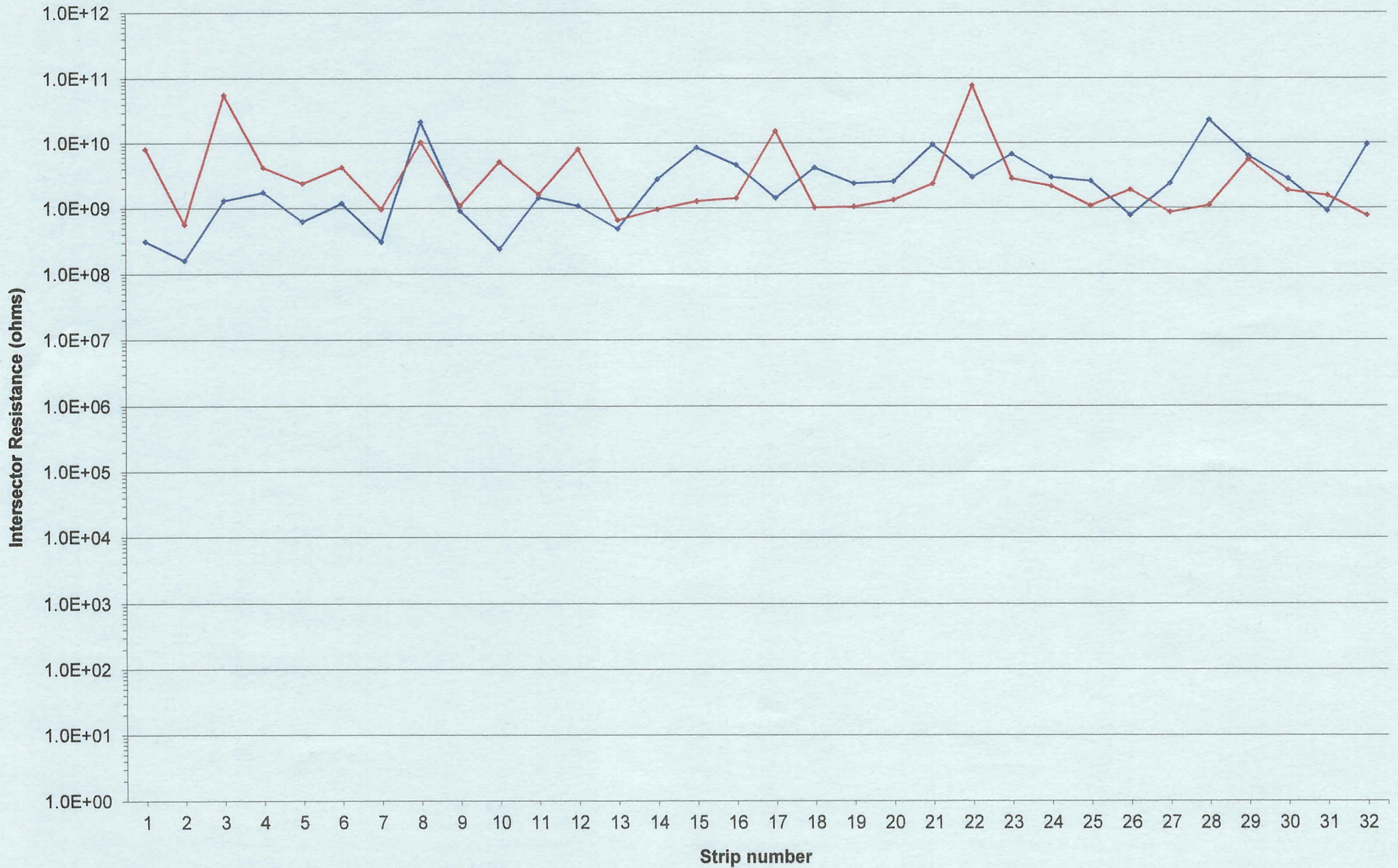
Inter @ Dep Inter @ 2* Dep V

S3_65
3587-15 Ohmic side Dep=3.2V



25 July 2023

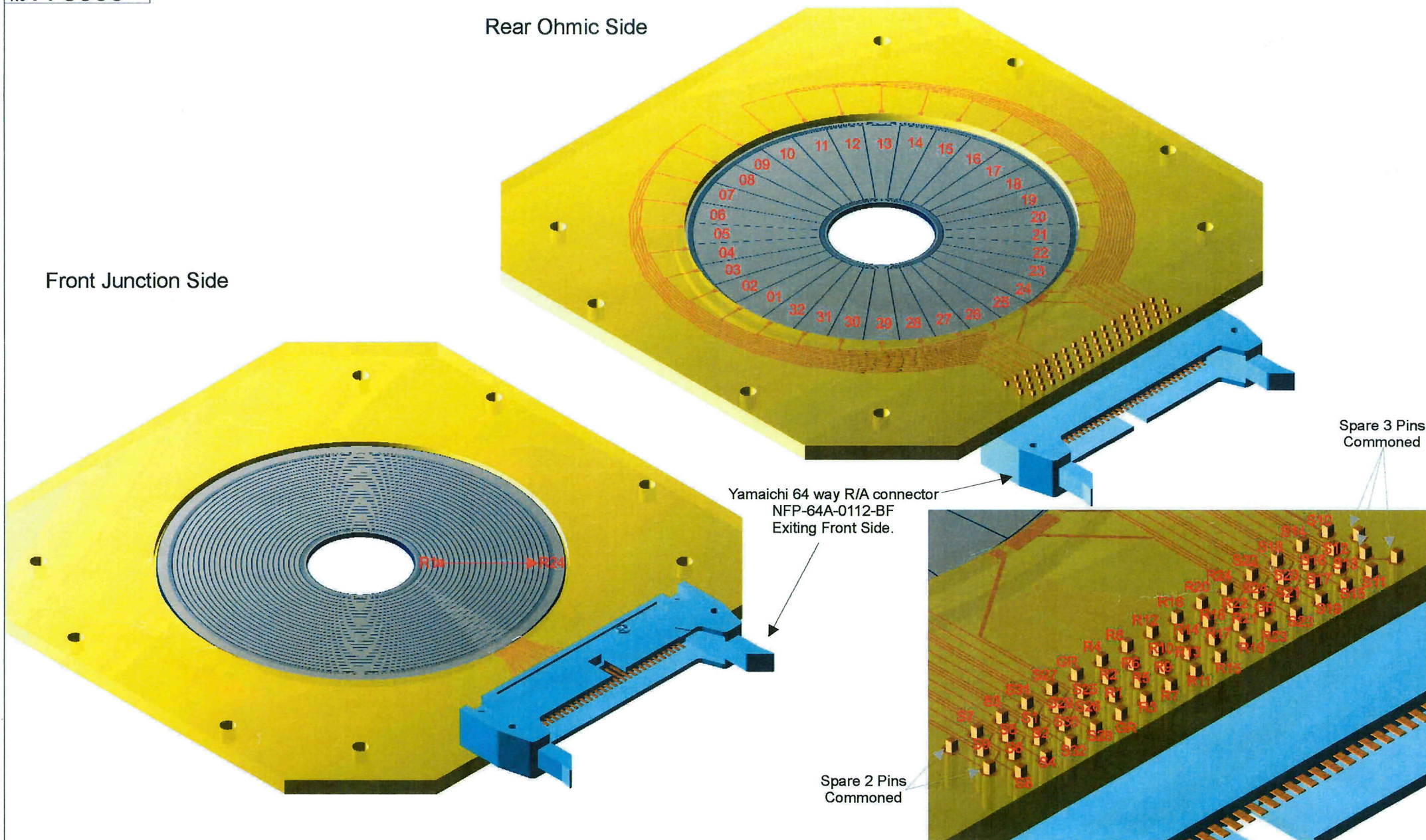
S3_65
3587-15 Ohmic side Dep=3.2V



Inter @ Dep Inter @ 2* Dep V

Rear Ohmic Side

Front Junction Side



Yamaichi 64 way R/A connector
NFP-64A-0112-BF
Exiting Front Side.

Spare 3 Pins
Commoned

Spare 2 Pins
Commoned

Drawn	Checked	Date 05/06/2007	Tolerances Unless Stated	Outputs Via: Yamaichi 4 Row Right Angled Connector NFP-64A-0112-BF
N.W	S.W		Package O/D $\pm 0.1\text{mm}$	Mating connector: Yamaichi NFS-64A Series
Des.			Package Hole $\pm 0.05\text{mm}$	Potted Wire Bonds: No
Appd.			Package Hole Pos'n $\pm 0.1\text{mm}$	Substrate Number: A-3329
Customer			Detector O/D $\pm 20.0\mu\text{m}$	Substrate Material: 2.4mm thick FR4 PCB material.
			Connector Orientation: To exit front junction side.	

Title.
**S3 3D Assembly.
Front and Rear View.**



MICRON SEMICONDUCTOR LIMITED

THIS DOCUMENT IS THE PROPERTY OF
MICRON SEMICONDUCTOR LTD AND IS
COMMERCIAL IN CONFIDENCE

graphics@micronsemiconductor.co.uk